

Case 5

Discrepancies in the diagnostic process
Woman with cytological-histological discrepancy
Management

Dr. Luis Serrano

- 32 years of age
- Smoker
- Nulligravid
- **HSIL Cytology**

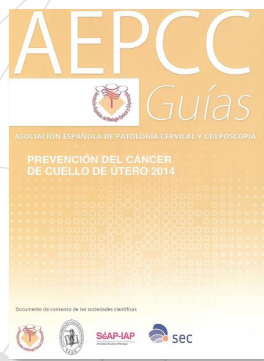
Reason for consultation

- **Sent for colposcopy**

Which of the following statements is true?

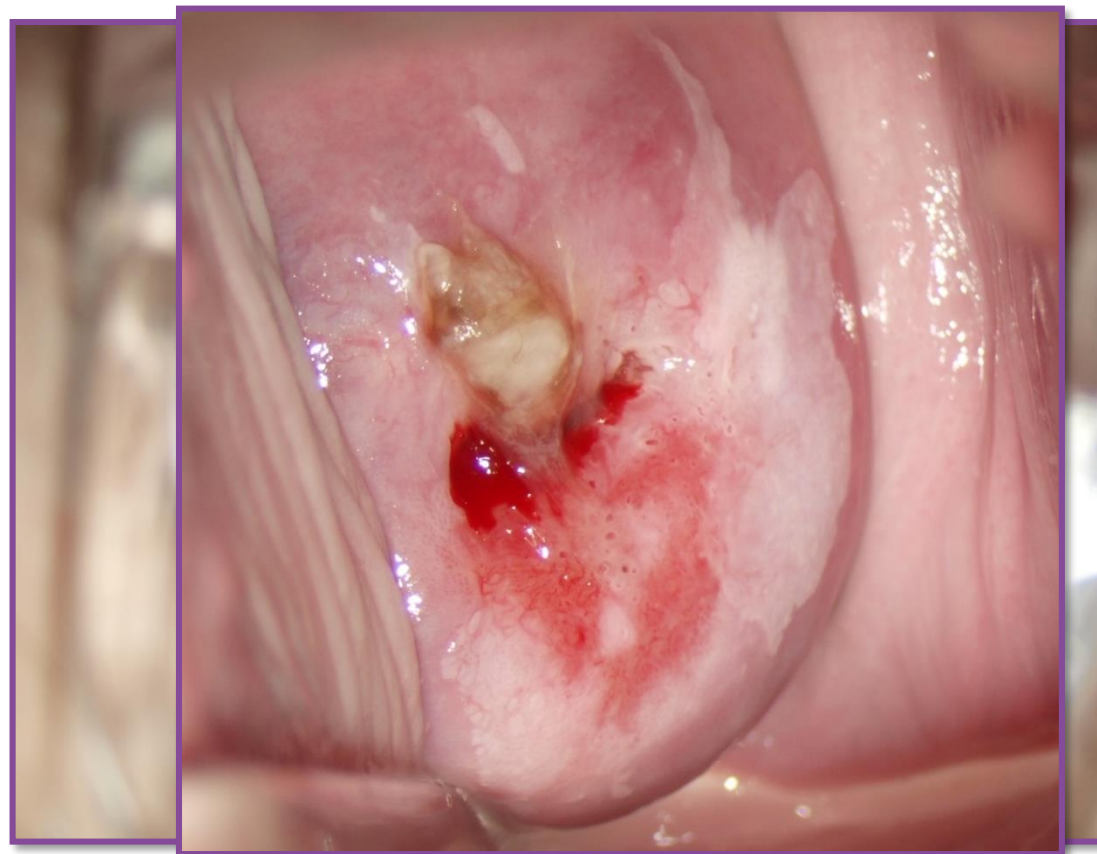
- 1. The indication is not appropriate: the indication is for treatment.**
- 2. Viral determination is important.**
- 3. In these patients, definitive HSIL histology is diagnosed in 60% of cases.**

- The option for treatment without histological diagnosis must be exceptional, in patients with Grade II colposcopy and with follow-up difficulties.
- Viral determination is not necessary for the indication.
- 8% of patients with HSIL cytology and > 30 years of age will develop invasive pathology at 5 years, while in 40% of cases, the definitive diagnosis does not confirm the high grade.

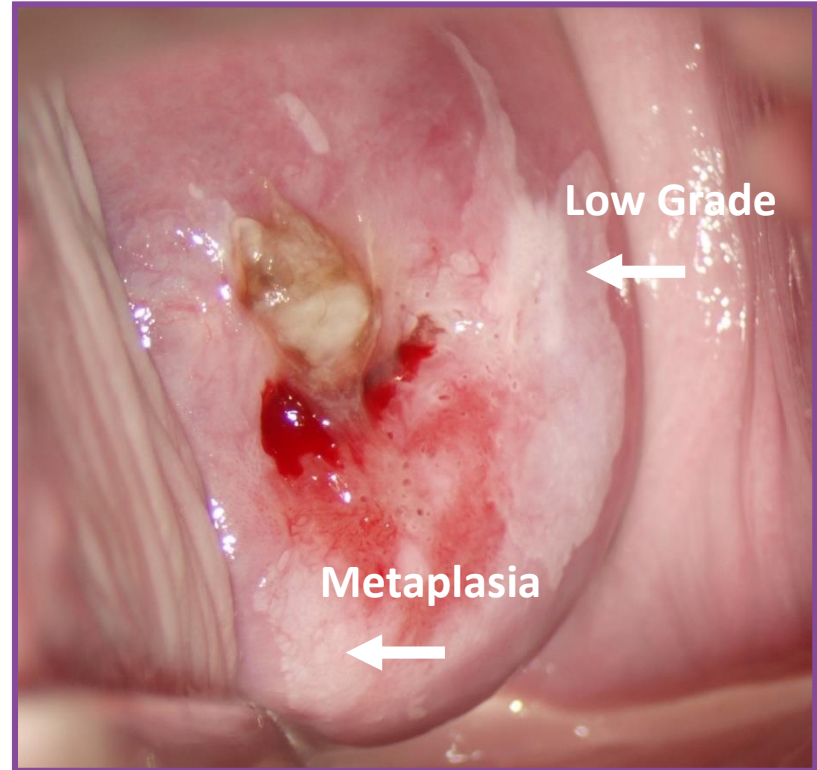


Colposcopy

Image with
acetic acid

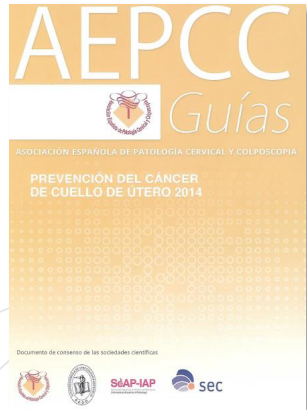


- Satisfactory, TZ Type 1.
- Weakly aceto-white lesion, extensive, peripheral, with geographic border, between 1 and 8 o'clock, with a somewhat more intense area confined to 3 o'clock.
- Compatible with minor changes.
- Biopsy performed: LSIL at 3 o'clock, squamous metaplasia at 8 o'clock.



Which of the following statements is true?

- 1. We should perform another cytological/colposcopic follow-up in 6 months.**
- 2. We should take an endocervical sample.**
- 3. Given the discrepancy, it is safer to treat with conization for a definitive diagnosis.**



Given the discrepancy and innocuous colposcopy, we should discard a non-visible endocervical affectionation.



Which of the following statements is true?

1. Strict cytological/colposcopic follow-up at 6 months.
2. Co-test or cytological/colposcopic follow-up at 1 and 2 years.
3. Co-test in a year and if negative, move to screening.

Follow-up for discrepant histological LSIL

(After histological diagnosis of LSIL with previous HSIL cytology)

PREFERRED OPTION

Co-test at 12 and 24 months

ACCEPTABLE OPTION

Cytology/Colposcopy at 12 and 24 months

